

FACILITIES PLANNING



Progressive Thinking, Integrated Planning

Portland Community College is Oregon's number one gateway to higher education and lifelong learning. As the region's largest post-secondary institution, PCC serves some 80,000 learners a year across a 1,500-square-mile district. Integrated planning activities across the college help ensure that long-term decision-making is strategic, inclusive and mission-focused. These efforts reflect a larger intention at PCC to create a culture of planning and innovation.

A number of integrated projects are currently under way as part of long-term planning efforts:



Strategic Planning

In 2015, PCC published a strategic vision that has become the college's overall map for ongoing planning and strategic actions.

<https://www.pcc.edu/about/administration/strategic-plan/affordable/>



Integrated
Planning



Facilities Planning

This process launched in fall 2016 to provide a comprehensive framework for assessing PCC's built environment and linking future capital and maintenance needs with strategic goals. The resulting plan will inform accreditation reporting as well as future infrastructure investment.



Academic and Student Affairs Planning

This broad-based, collaborative effort will provide an ongoing process for understanding current and future strengths and needs. The resulting roadmap will ensure continuous improvement of academic programs and services in support of PCC's mission and strategic plan.



IT Planning

This process launched in fall 2016 to provide an institutional blueprint of strategic technology projects that will align to PCC's core strategies as well as to key college-wide planning efforts. The action plan will focus on a 3-5 year timeframe with the goal of driving IT infrastructure, data, applications and processes to best-in-class status for educational technology.

INTEGRATED PLANNING

- A collective effort to support and implement the Strategic Plan
- A coordinated approach to college development
- A new culture of planning for the college

FACILITIES PLANNING

WHAT IT IS

- A thorough evaluation of the built environment
- A review of how existing spaces are used and how efficiently
- A foundation to inform future college growth

WHY IT IS

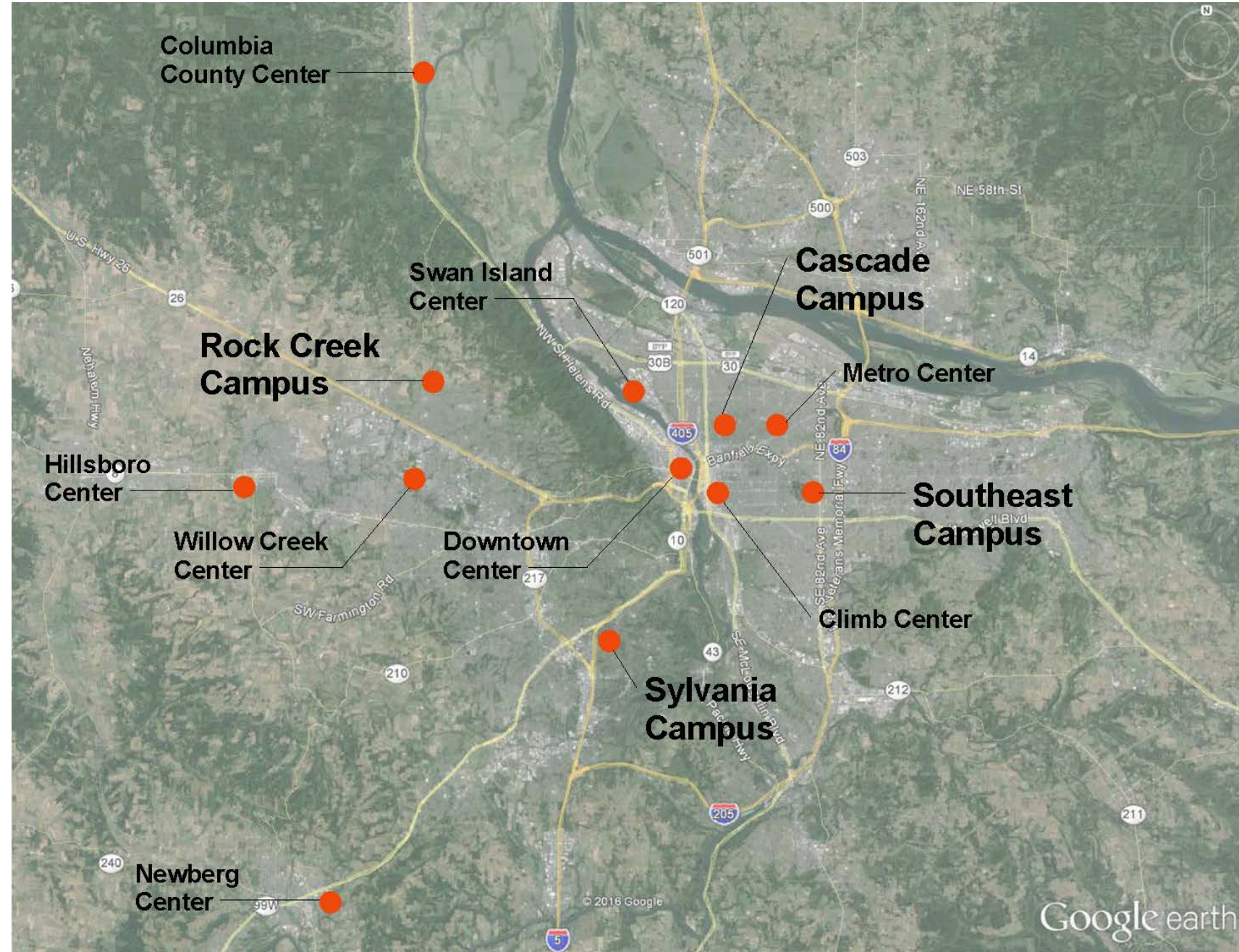
- Noted in the 2015 accreditation report
- A way to identify project need
- A methodology to prioritize projects



FACILITIES PLANNING: A PHASED APPROACH

PHASE I: EXISTING CONDITIONS

- Assess all PCC-owned facilities and infrastructure
- Complete early 2018



FACILITIES PLANNING

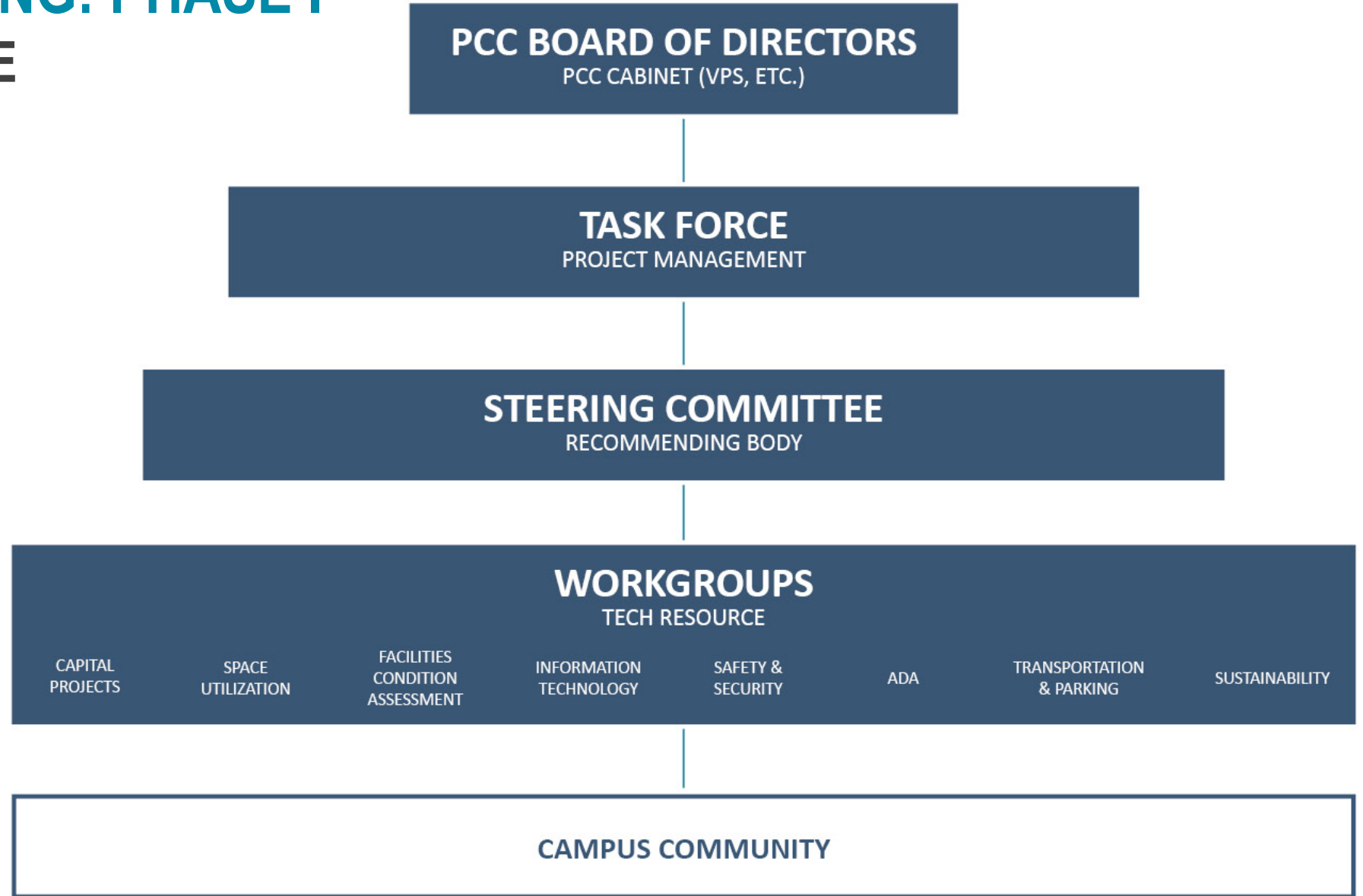
PHASE II: COLLEGE DEVELOPMENT

- Incorporate Academic and Student Affairs Planning
- Evaluate growth capacity at campuses and centers
- Identify possible development opportunities and partnerships
- Inform potential future bond measures



FACILITIES PLANNING: PHASE I

PROJECT STRUCTURE



CAPITAL PROJECTS

PCC 2017 November bond proposal is a \$175 million renewal bond with three areas of focus:

WORK FORCE TRAINING

- Metropolitan Workforce Training Center
- Capital Equipment

HEALTH PROFESSIONS TRAINING AND STEM

- Sylvania's Health Technology Building
- Health Interprofessional Training

SAFETY, SECURITY, ADA

- Extend Lifespan of Facilities
- Information Technology Upgrades
- Safety and Security Upgrades
- Safety, ADA and Transit Needs
- Cascade Public Safety Building
- Rock Creek Child Development Center
- Facilities Planning

SPACE UTILIZATION

TYPES OF SPACES INCLUDED IN THE STUDY

General Administrative Space

Offices
Conference rooms
Support spaces

Academic Administrative Space

Offices
Conference rooms
Support spaces

Regularly Scheduled Instructional

Classrooms
Teaching Labs

Event Space

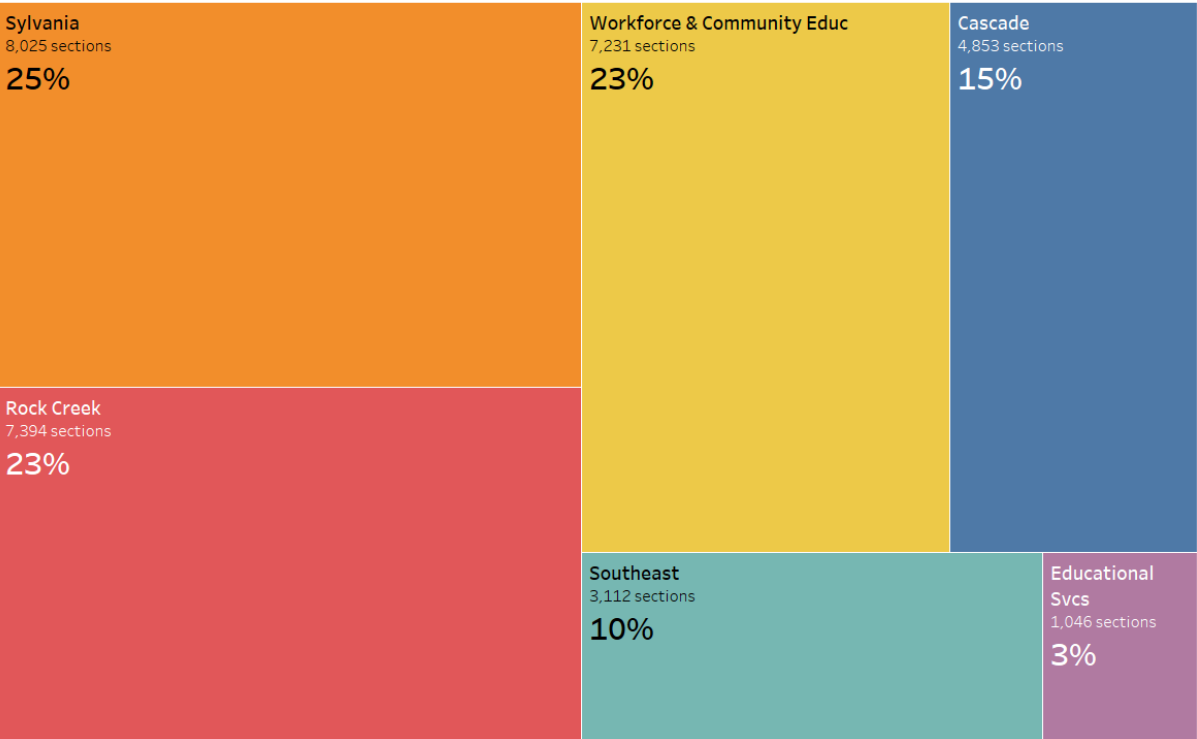
Meeting rooms
Assembly spaces

Student Support Space

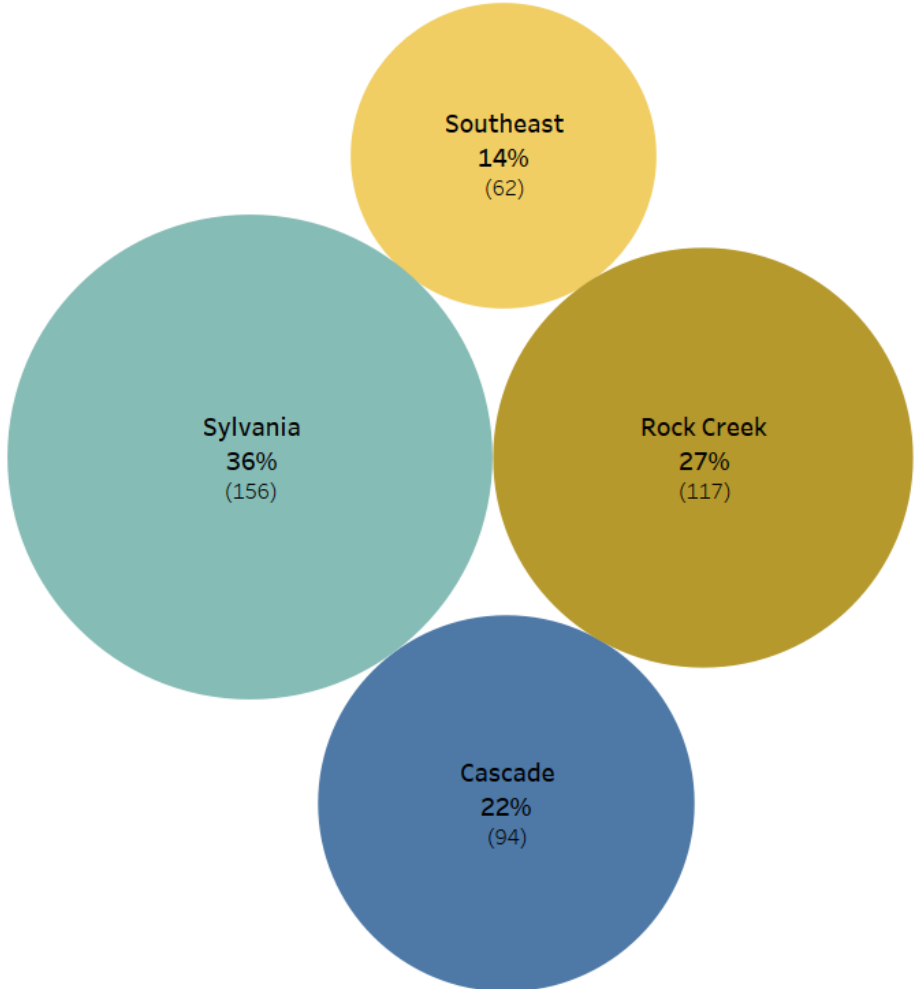
Community space
Student service space
Tutoring space
Advising offices

SPACE UTILIZATION

DATA POINTS



DISTRIBUTION OF COURSES BY CAMPUS



NUMBER OF ROOMS BY CAMPUS

FACILITIES CONDITION ASSESSMENT

Assess all PCC-owned properties identifying elements needing maintenance, repair, modernization or significant investment to determine building component lifespans and repair/replacement costs

FIRE & LIFE SAFETY

- Code issues

INTERIOR FINISHES

- Partition Condition
- Floor Condition
- Base Condition
- Ceiling Condition

DOORS

- Panel Condition
- Hardware Condition
- Clearances per code
- Rating

LANDMARKS, ART, VIEWSHEDS

MECHANICAL, ELECTRICAL, PLUMBING

- Area Served
- Code deficiencies
- System deficiencies
- Action to mitigate deficiency
- Code Violation
- Equipment condition
- Equipment life expectancy
- Maintenance
- Energy efficiency

SKYLIGHTS

- Condition
- Functionality
- Controls / function
- Sufficient light allowance

EXTERIOR ENVELOPE

- Wall finish material condition
- Soffit material finish condition
- Other finish conditions

ROOFING

- Membrane condition
- Roof penetration condition
- Flashing condition
- Roof drainage condition

ECOLOGICAL RESOURCES

- Canopy cover
- Environmental conservation zone
- Riparian value zones
- Wetland boundaries

INFORMATION TECHNOLOGY

- Inventory and assess existing technology infrastructure with a focus on existing fiber and copper topology, telecommunication rooms, and wireless access
- Evaluate classroom technology, lecture capture and video production
- Assess other technologies to support academic and operational uses
- *Additional scope under consideration includes band-width utilization, redundancy, and disaster recovery*

SAFETY & SECURITY

- Identify and assess existing electronic public safety systems including access control, mass notification, video surveillance, and intrusion
- *Development of college-wide standards also under consideration*



ADA

- Identify pathways from parking lots and bus hubs to building entrances
- Conduct interior building assessments



TRANSPORTATION & PARKING

- Review and update the 2012 TDM Plan.
- Assess current parking and circulation needs, including parking lot maintenance, ADA parking, and electric vehicle charging
- Evaluate pedestrian and bicycle infrastructure
- Evaluate shuttle service
- Evaluate wayfinding

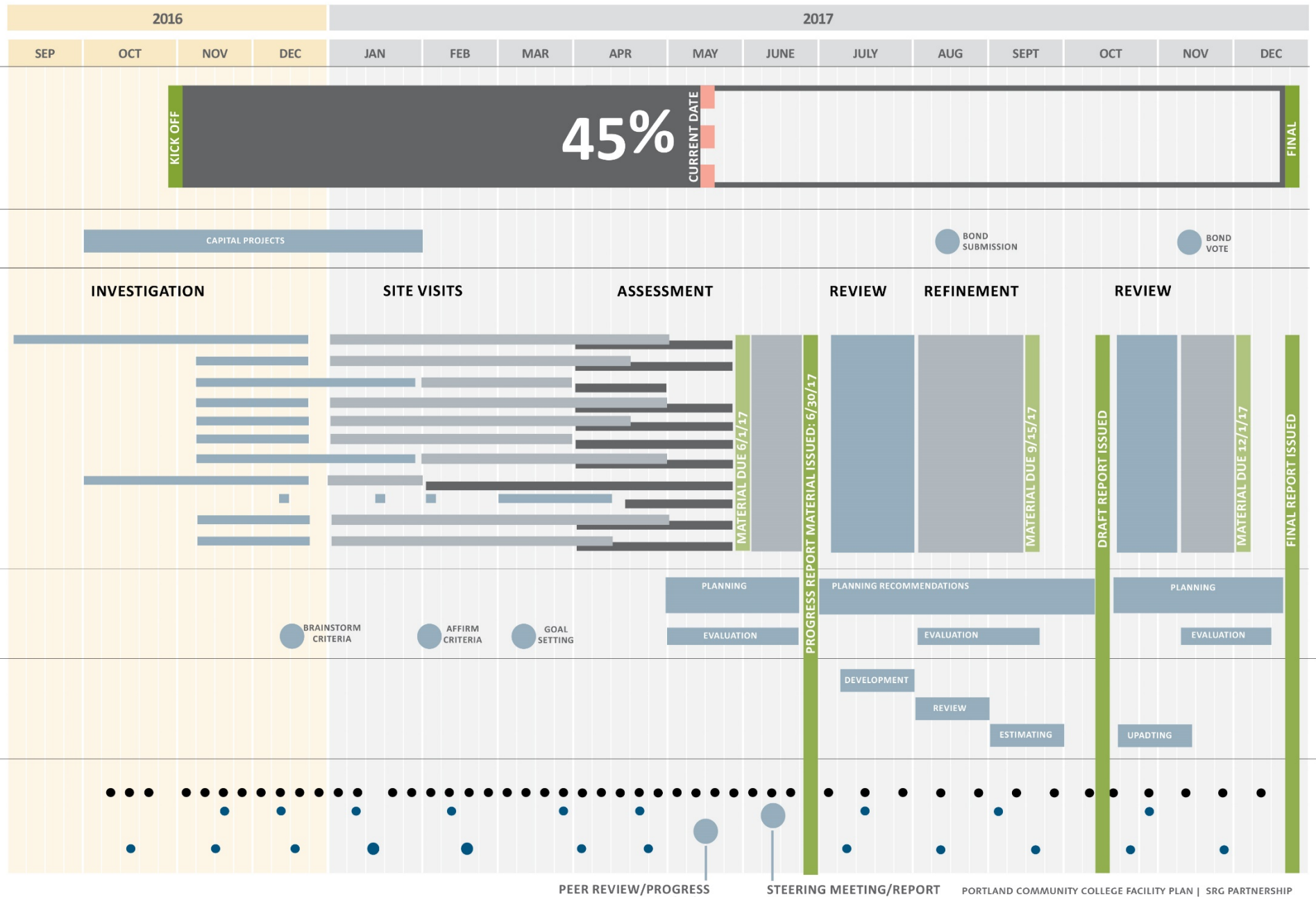


SUSTAINABILITY

- Energy and emissions
- College operations
- Construction and renovation
- Grounds and natural systems
- Health and well-being
- Education and culture



SCHEDULE



CONTACT

Rebecca Ocken
Project Manager
971-722-8463
rebecca.ocken@pcc.edu