



FACILITIES PLAN
SYLVANIA CAMPUS
WORKSHOP
SPRING 2021



**Portland
Community
College**

Planning & Capital
Construction

- 1** *WHAT IS A FACILITIES PLAN?*
- 2** *SCHEDULE AND COMMUNITY INPUT*
- 3** *BREAKOUT DISCUSSIONS*
- 4** *WRAP UP AND NEXT STEPS*

SPACE NEEDS ANALYSIS

SPACE NEEDS ASSESSMENT
BUILDING FUNCTIONAL
ASSESSMENT

DEMOGRAPHIC ANALYSIS

DEMOGRAPHIC + ENROLLMENT
ANALYSIS
AFFORDABLE HOUSING STUDY

**FACILITIES
PLAN**

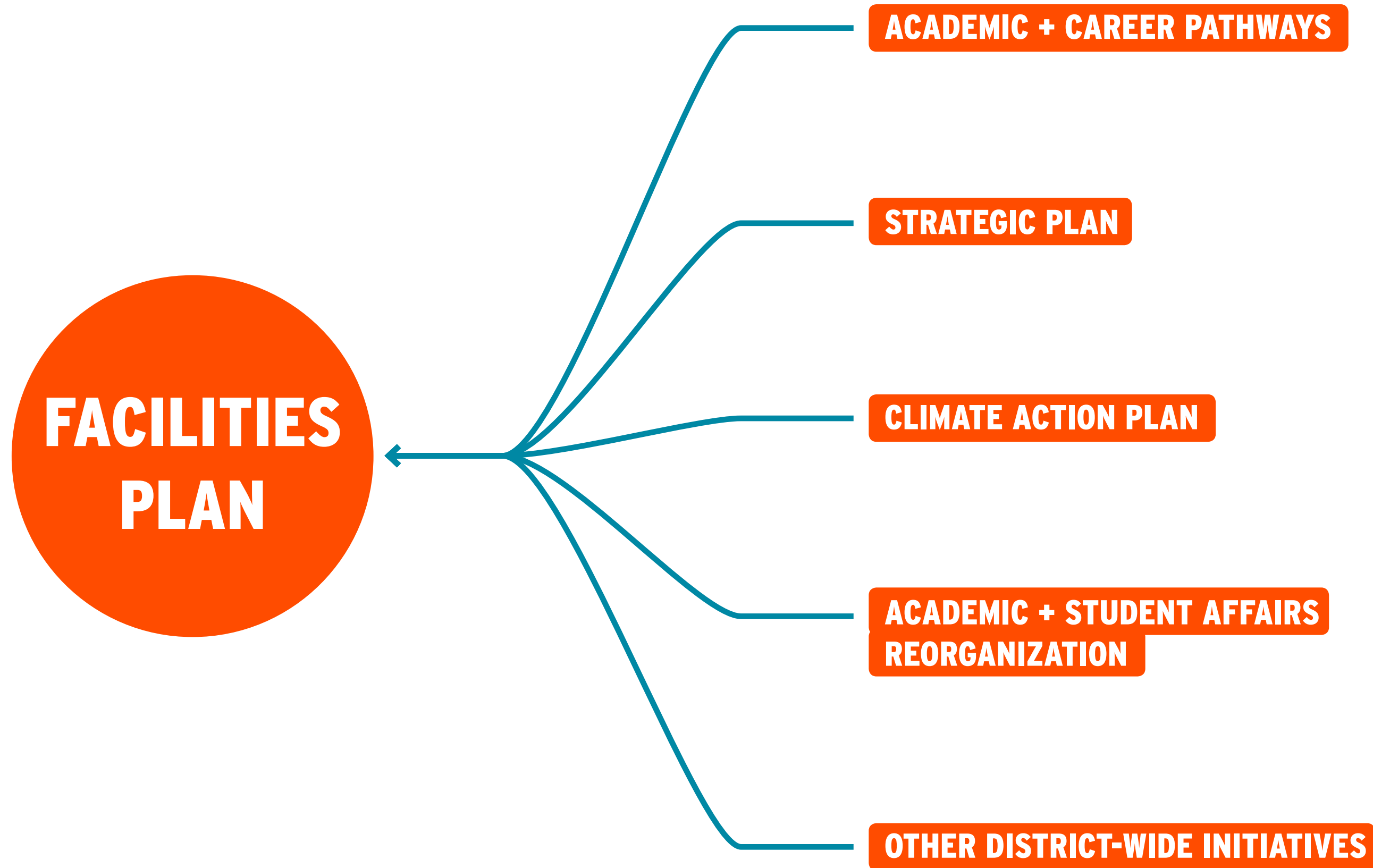
**COMMUNICATION, OUTREACH +
ENGAGEMENT**

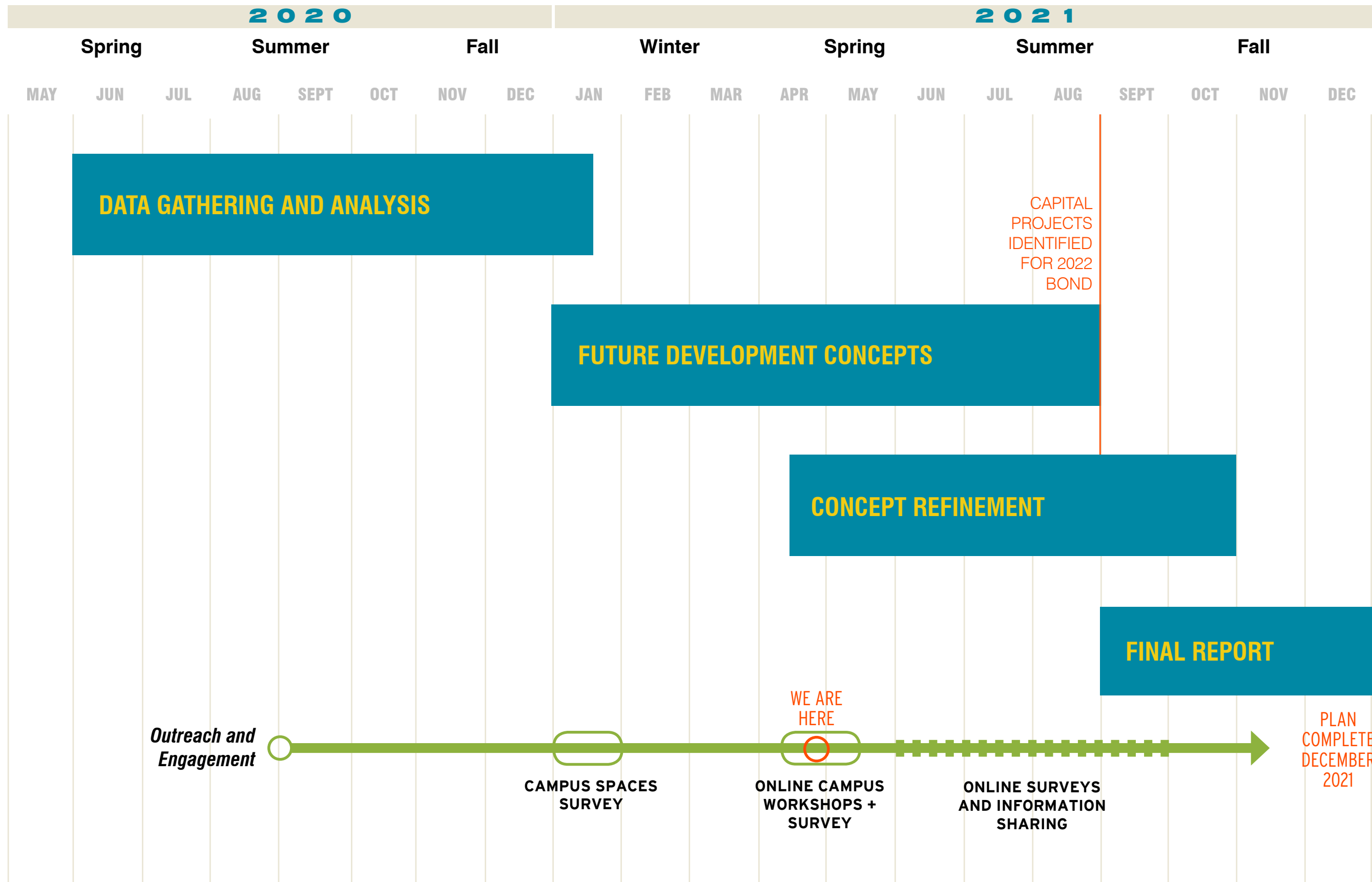
CRT STUDENT COHORT
ONLINE SURVEYS
LISTENING SESSIONS
WORKSHOPS
TABLING

DEVELOPMENT CONCEPTS

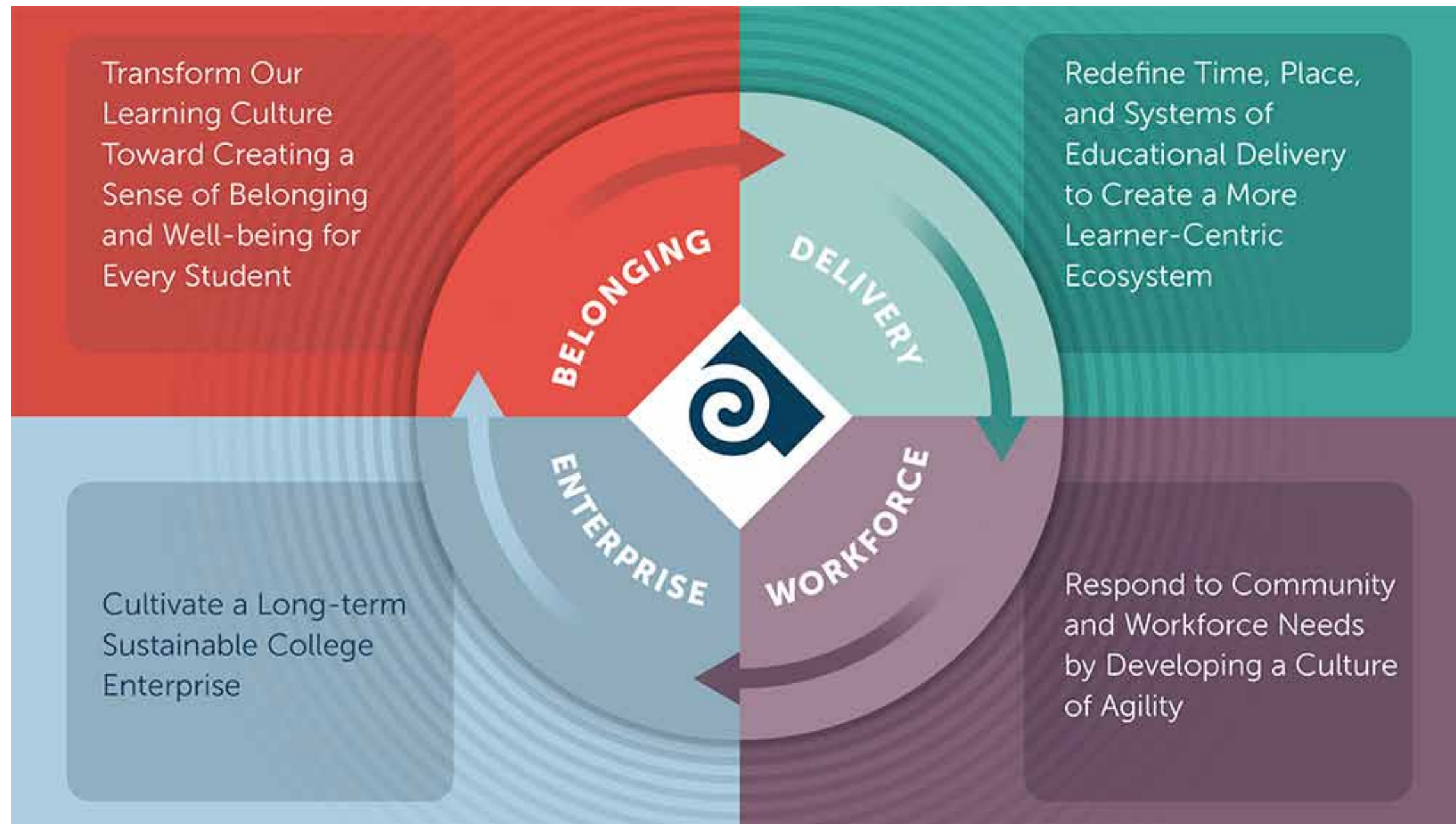
ZONING+REGULATORY REVIEW
POTENTIAL DEVELOPMENT SITES+CAPACITY
TRANSPORTATION IMPROVEMENTS
CAPITAL PROJECTS LIST
BOND PROJECTS LIST

**CRT + DESIGN JUSTICE
FRAMEWORK**



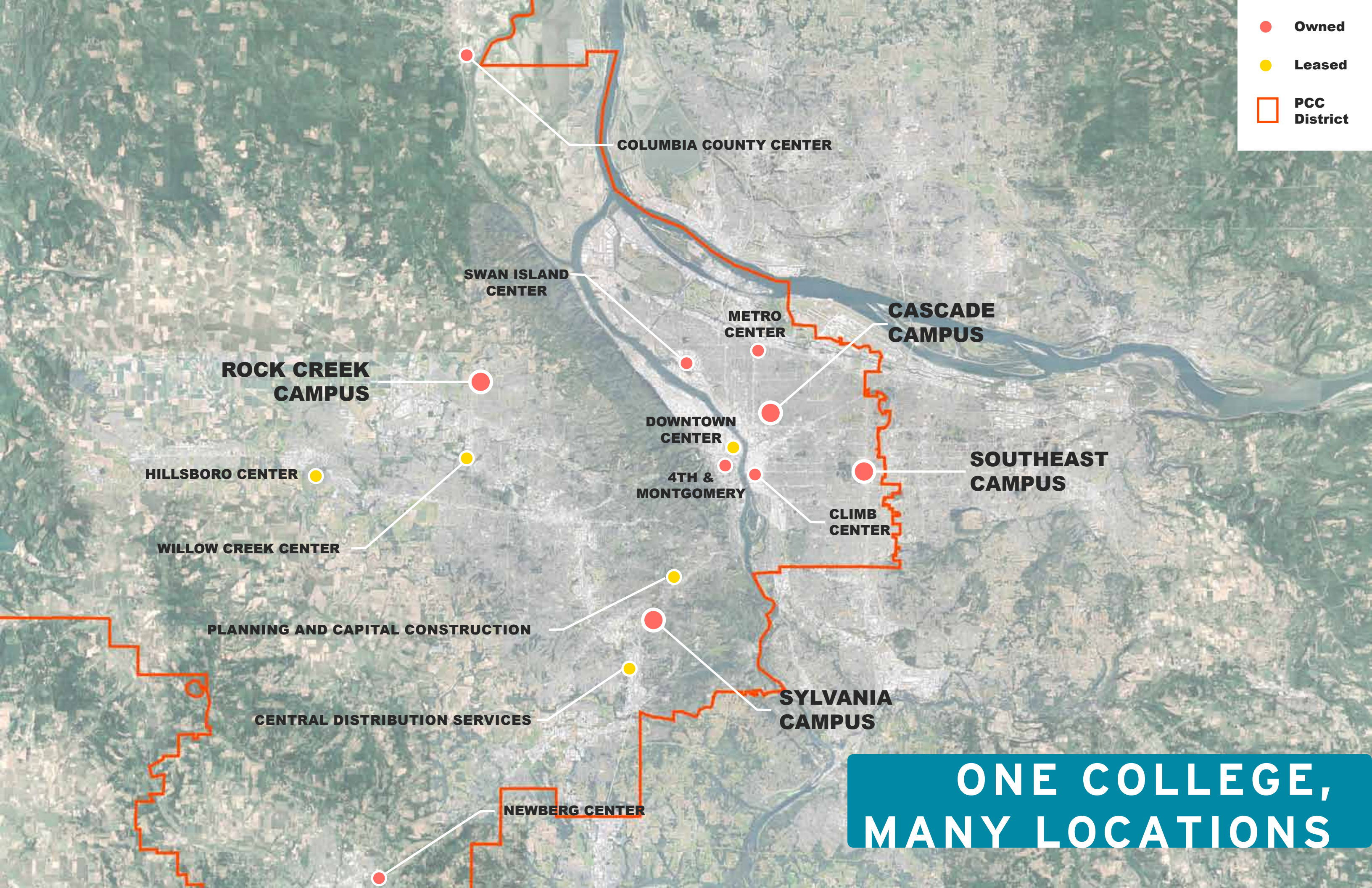


PROJECT SCHEDULE



STRATEGIC PLAN AND "ONE COLLEGE" MODEL

- Owned
- Leased
- PCC District



ROCK CREEK CAMPUS

COLUMBIA COUNTY CENTER

SWAN ISLAND CENTER

METRO CENTER

CASCADE CAMPUS

HILLSBORO CENTER

DOWNTOWN CENTER

4TH & MONTGOMERY

SOUTHEAST CAMPUS

WILLOW CREEK CENTER

CLIMB CENTER

PLANNING AND CAPITAL CONSTRUCTION

SYLVANIA CAMPUS

CENTRAL DISTRIBUTION SERVICES

NEWBERG CENTER

**ONE COLLEGE,
MANY LOCATIONS**







CONSIDER: WHAT MAKES A SPACE FEEL WELCOMING TO YOU?

How can PCC spaces better support and reflect the experiences, cultures, and contributions of BIPOC students, faculty, and staff?

How can PCC spaces better support, embody, and reflect the many dimensions of diversity in the PCC community?

Are there barriers to equitable student success at this campus that the Facilities Plan can help to dismantle?

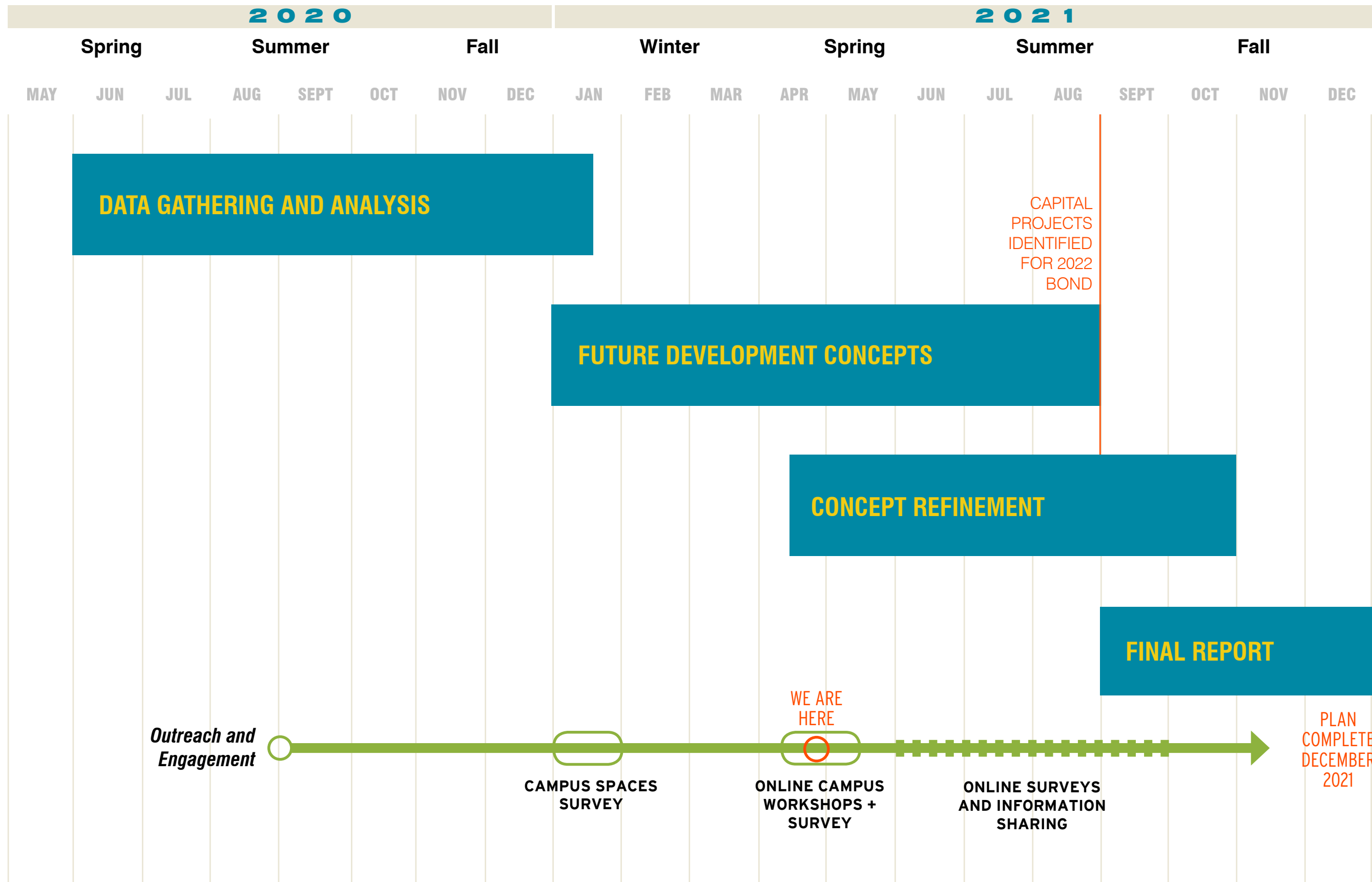
Note: Amara H. Pérez, PhD., worked with the Facilities Planning team to introduce a Critical Race Spatial Lens. These questions are informed by Dr. Perez's work. Dr. Perez developed and coordinated Space Matters, designed to recruit, train, and support a cohort of PCC students of color to work as co-researchers in phase one of the planning process. For more information check out the project link: www.spacemattersatpcc.com

CAMPUS SPACE & CRITICAL RACE THEORY

An aerial photograph of a university campus, showing several large, light-colored buildings with flat roofs, interspersed with green lawns and trees. The image is slightly faded and has a soft, ethereal quality.

TODAY WE WANT TO LEARN ABOUT:

- *Your perception and experience of physical spaces at Sylvania Campus*
- *Your vision for the future of campus spaces*
- *Your thoughts and ideas about how campus spaces can be made more welcoming*



PROJECT SCHEDULE

An aerial photograph of a campus, showing several large, multi-story buildings with light-colored roofs and walls. The buildings are surrounded by green trees and grassy areas. The image is slightly faded and has a soft, ethereal quality.

THANK YOU!

- ***FILL IN AND SHARE THE ONLINE SURVEY VERSION OF THE CAMPUS WORKSHOPS:***

<https://www.surveymonkey.com/r/D5H8M7S>

- ***CONTACT REBECCA OCKEN BY EMAIL WITH ANY COMMENTS OR QUESTIONS:***

REBECCA.OCKEN@PCC.EDU