

History of Welded Sculpture

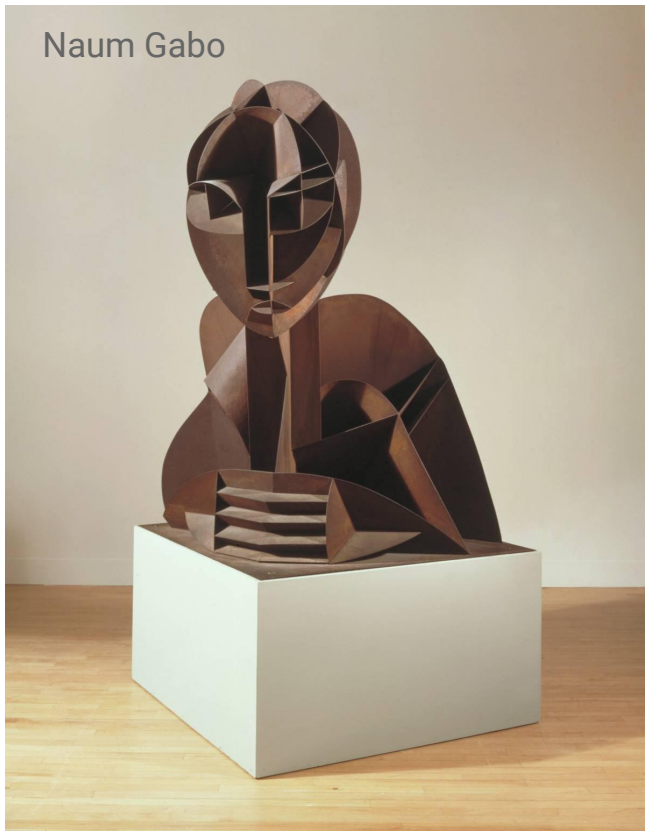
A dark blue diagonal graphic element that starts from the bottom left corner and extends towards the top right corner, creating a triangular shape in the lower half of the page.

Early Metal Sculpture

- Sculptural metal objects like masks, figures and jewelry have been found dating back to 7000 BC
- Decorative Ancient Egyptian metal fittings, circa 1295 –1070 B.C.
- Within the decorative arts and sculpture casting and blacksmithing was the main metalworking processes through Prehistory, the Middle Ages and into the Contemporary Age.
- The first welded sculpture was made in 1913 by Vladimir Tatlin, a Russian Constructivist



Naum Gabo



Barbara Hepworth



Anthony Caro



Ashcroft and Moore



Constructivist Sculpture (1915-1934)



Eddiart



Julio Gonzalez



Pablo Picasso

Cubist Sculpture (1907-1922)

Alexander Calder



Isamu Noguchi



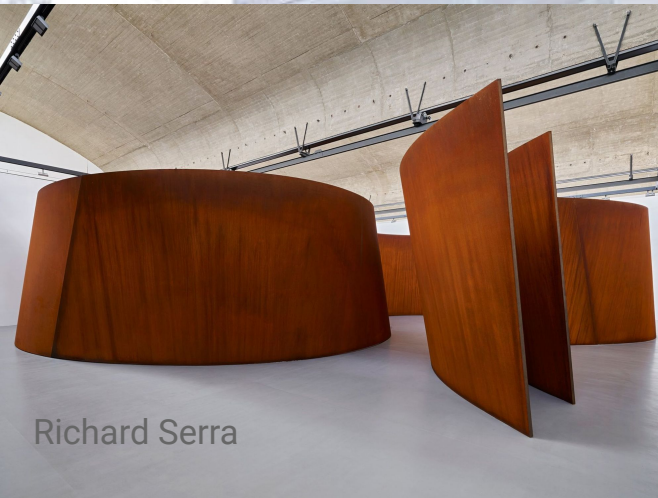
Alberto Giacometti



Surrealist Sculpture (1924-1966)



Hula Laiser Beja



Richard Serra



Roxy Paine



Royden Mills

Conceptual Sculpture (1960–Present)